

Belfast Hub

City Council, City Infrastructure Meeting

December 2015

let's go together
translink.co.uk



Co-financed by the European Union
Trans-European Transport Network (TEN-T)



Department for
Regional
Development
www.drda.gov.uk



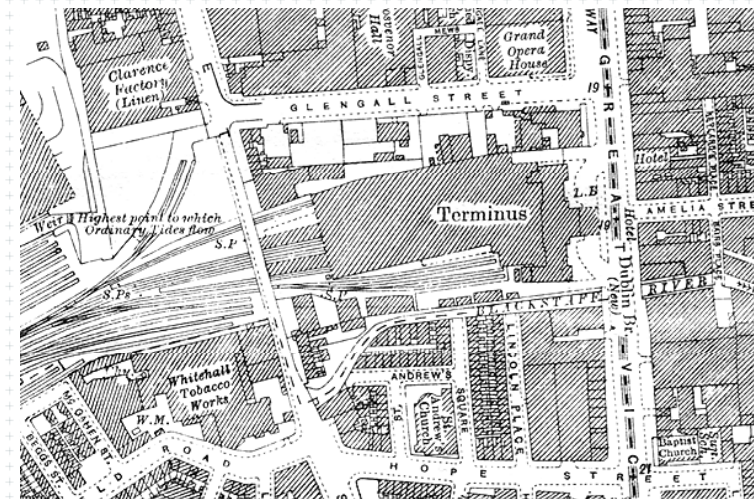
Great Victoria Street Station



1968



1964



1931

What is the Belfast Hub?

Transport is an enabler for:

- Regeneration
- Economic Growth



King's Cross Station



Sheffield Station



Birmingham New Street



Cardiff Station (proposed)

Station Investment

Steer Davies Gleave

The Value of Station Investment (Nov 2011)



Role of stations in the economy:

- Providing Connectivity
- Providing Capacity for Growth
- Supporting Sustainable Economic Growth
- Acting as a Gateway
- Offering Development Opportunity



Key Research Findings

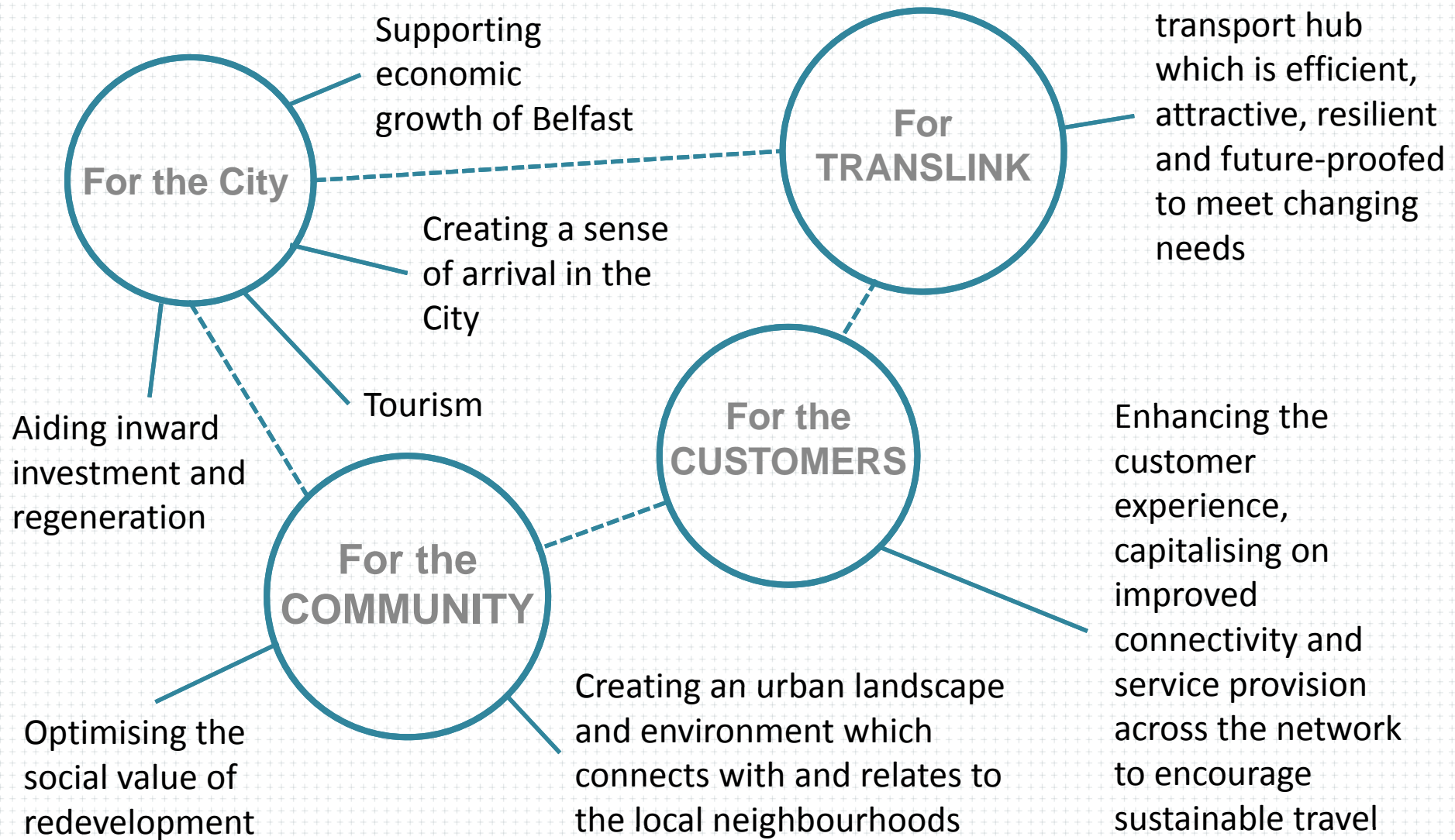
Steer Davies Gleave

The Value of Station Investment (November 2011)

- Help stimulate growth and attract businesses
- 67% increase in rateable values (Sheffield)
- Helped to create 650,000 sq.ft new office space (Manchester)
- Increase property value by 33% (Manchester)
- Act as a catalyst to broader development/ regeneration



Anticipated Outcomes



The Project Need

- Passenger transport is growing
- Current facilities operating at capacity, not integrated
- Poor advert for NI – tourism
- Network constrained
- Underutilisation of strategic property asset

80
million

Number of passenger journeys made each year in Northern Ireland

The annual footfall of GVS Rail and Europa Buscentre in 2014, up from 6.7m in 2012

10
million



Outline Proposals

Existing

- 4 inter-urban rail platforms
- 18 bus stands
- Non-integrated facilities
- Poor retail offer
- Lack of visibility

Proposed

- Additional rail platforms serving NI Railways
- Enterprise Service
- Third line to Adelaide
- Additional bus stands
- Attractive retail, F&B
- Enhanced visibility and accessibility, including BRT
- Area regeneration
- Jobs and Opportunities



The Project Team

Translink have a fully integrated team to support delivery of the project

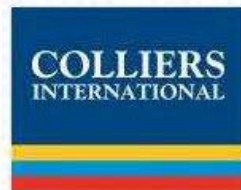


JOHN MCASLAN + PARTNERS

ARUP



AECOM



let's go together
translink.co.uk



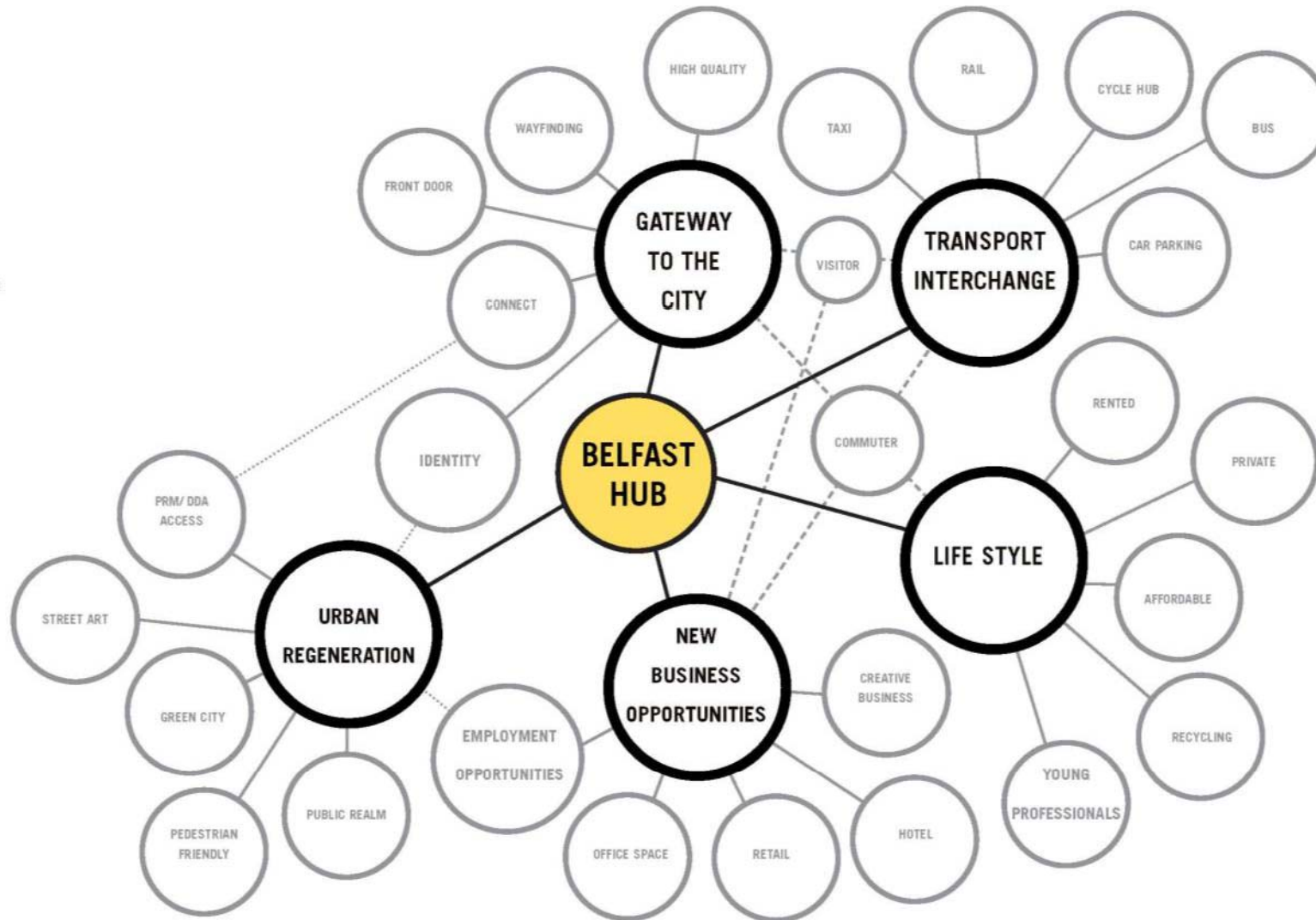
Co-financed by the European Union
Trans-European Transport Network (TEN-T)



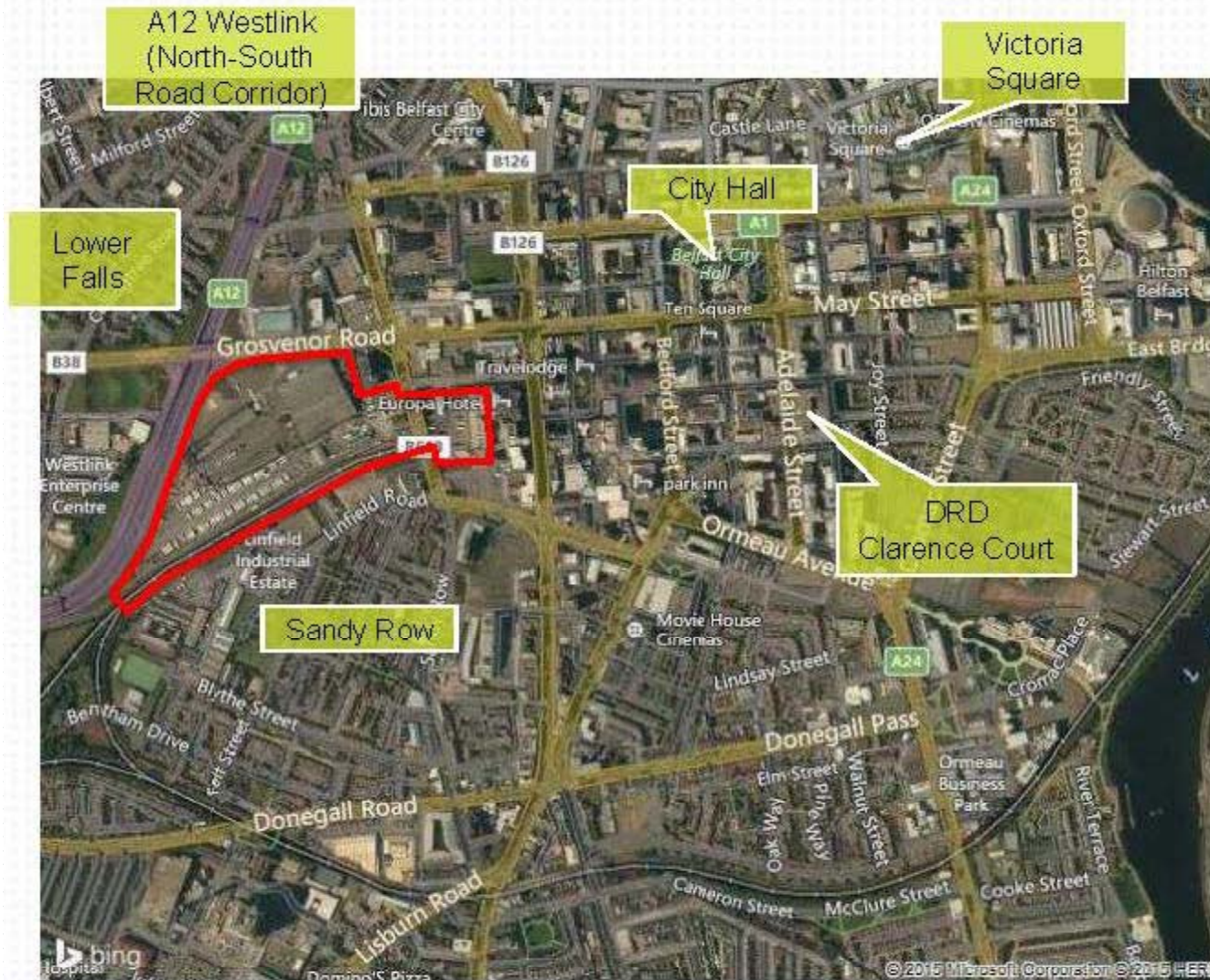
Department for
Regional
Development
www.drdo.gov.uk



Masterplan Strategy



Belfast Hub location



One of the largest land plots available in Belfast City

The Project Site



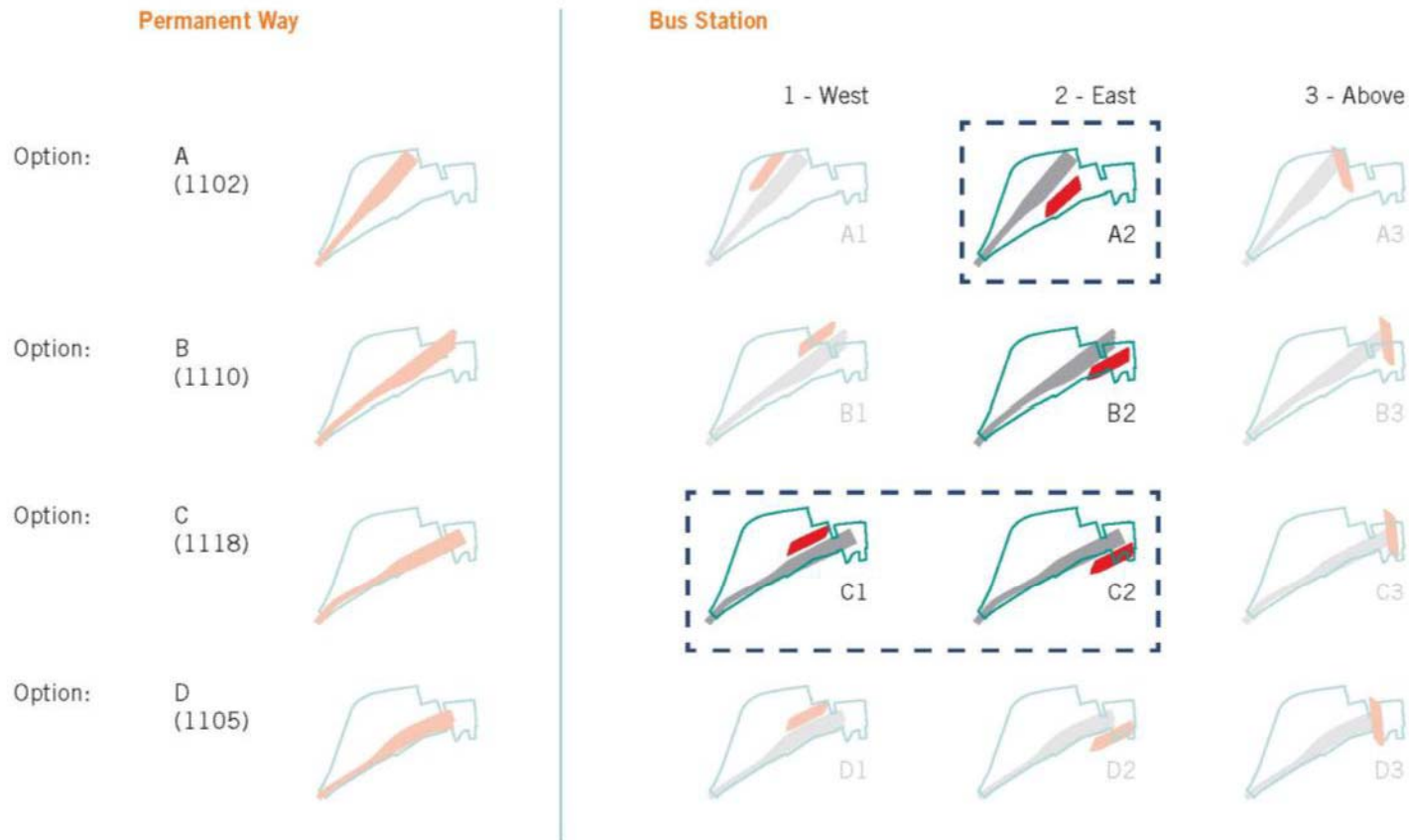
Proposed mall entrance



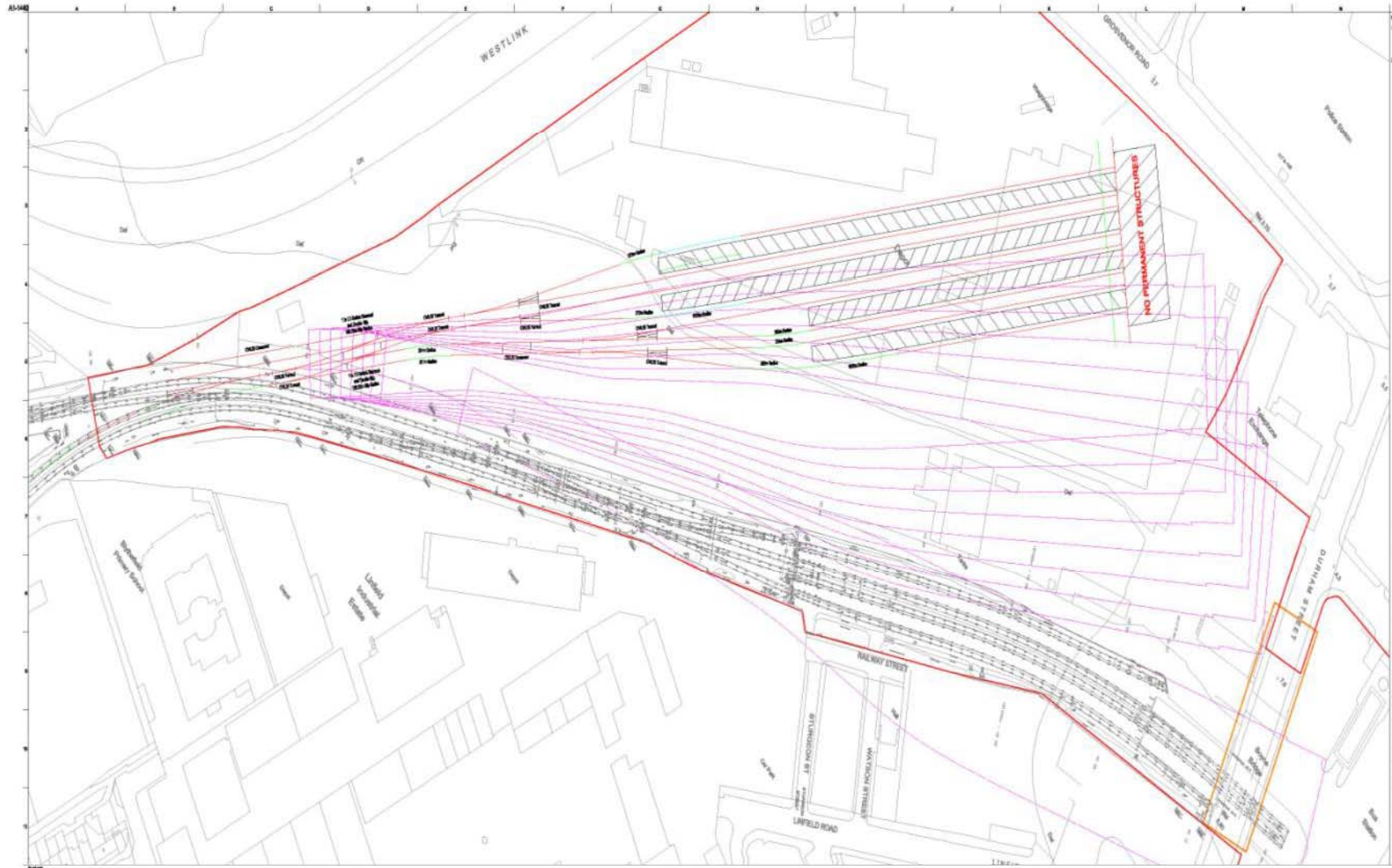
Existing mall environment



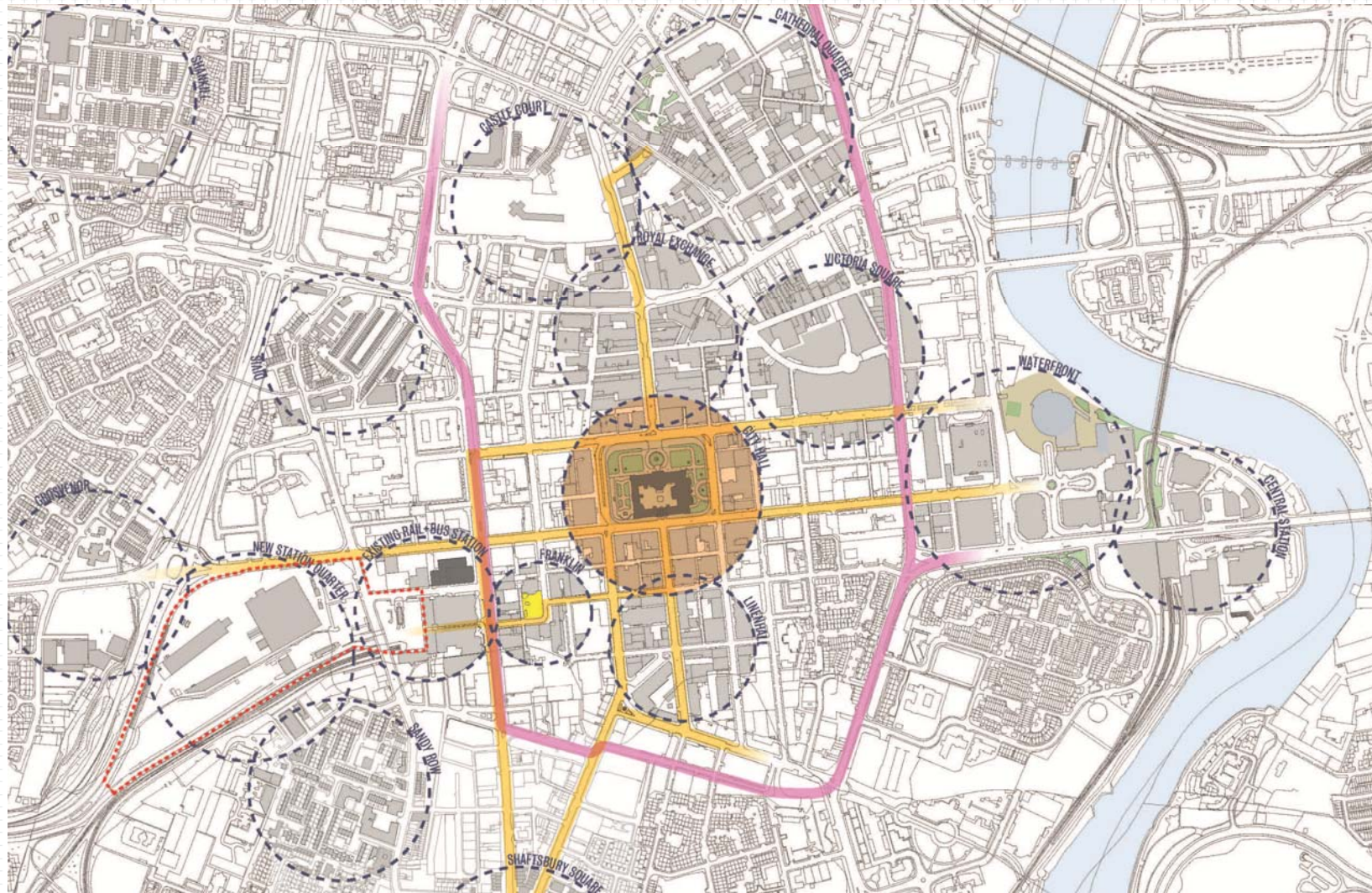
Feasibility Appraisal



Track alignment



City Context



let's go together
translink.co.uk



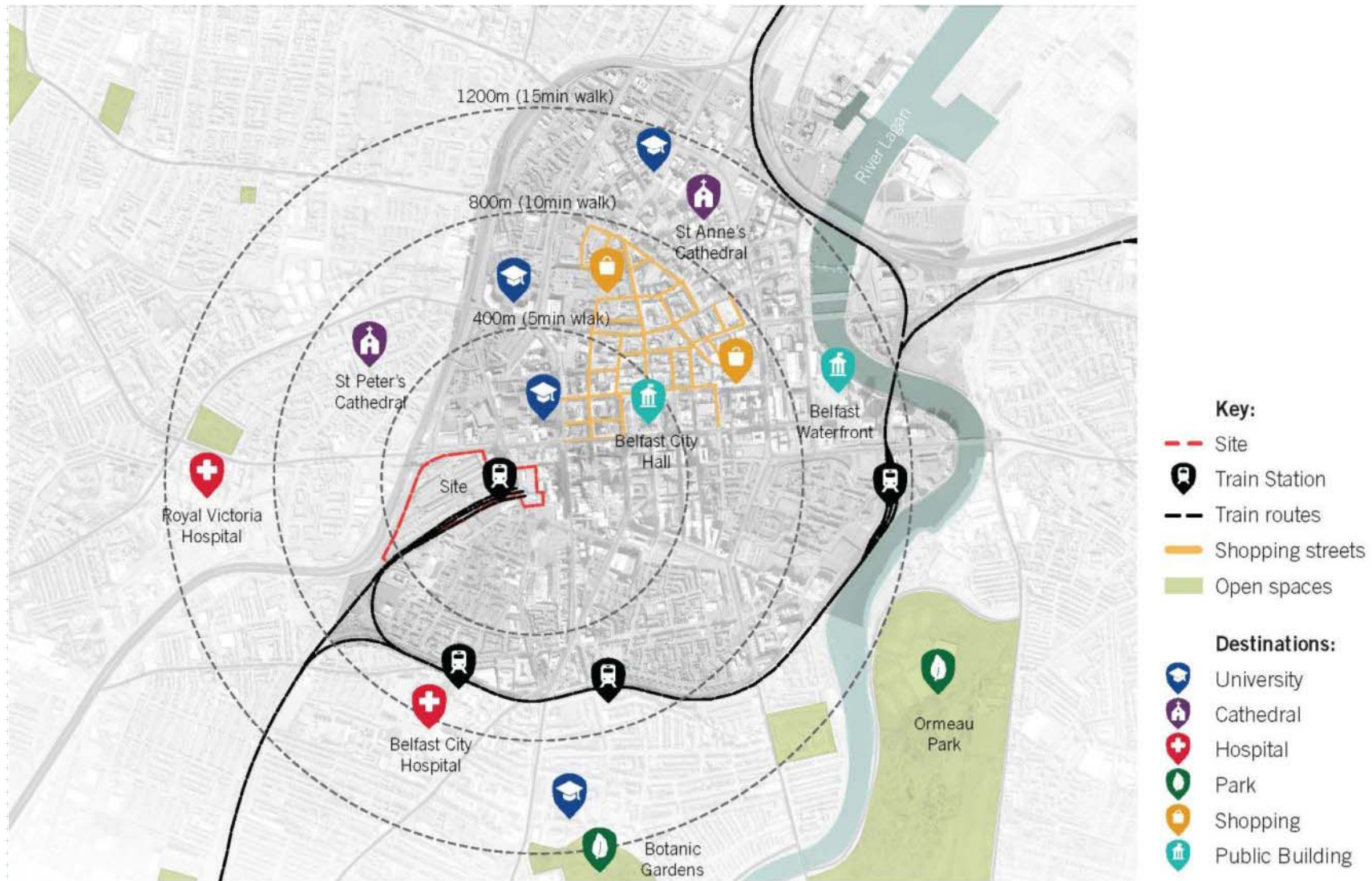
Co-financed by the European Union
Trans-European Transport Network (TEN-T)



Department for
Regional
Development
www.drtni.gov.uk



City Context - Destinations



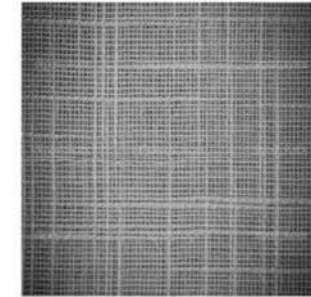
Existing Constraints



Hub - Precedents



**1. Linen
folded form**



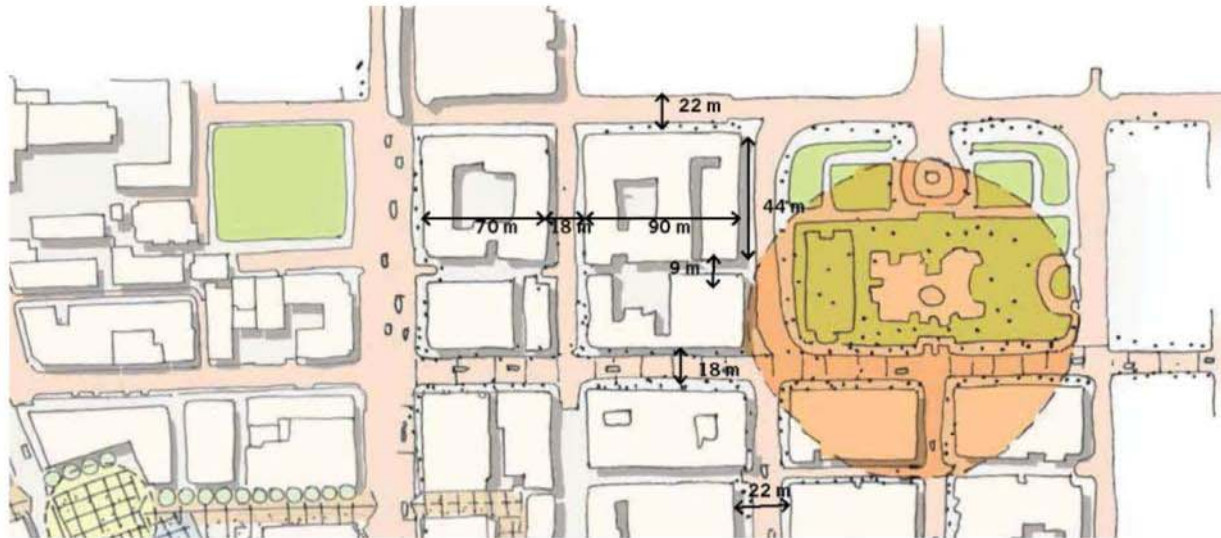
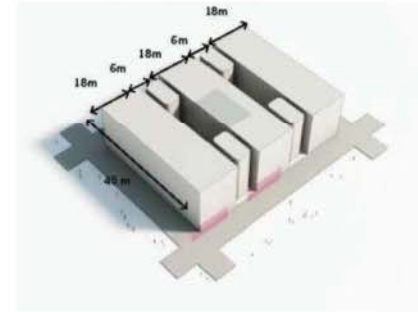
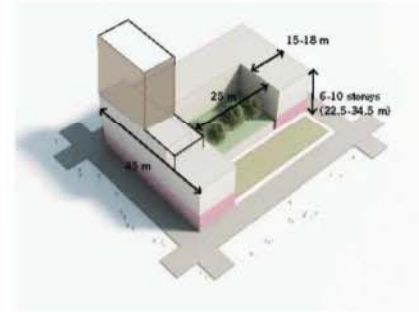
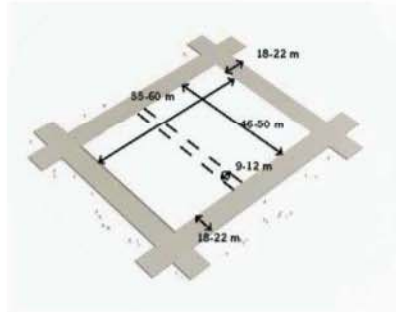
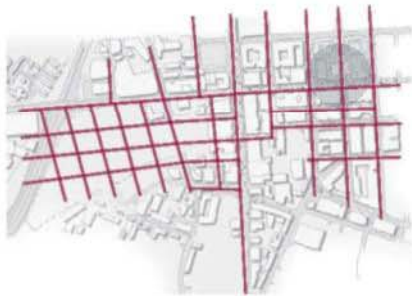
**2. Geology
basalt/limestone
striation**



**3. Shipbuilding
tradition**



City Grain



Alignment One



let's go together
translink.co.uk



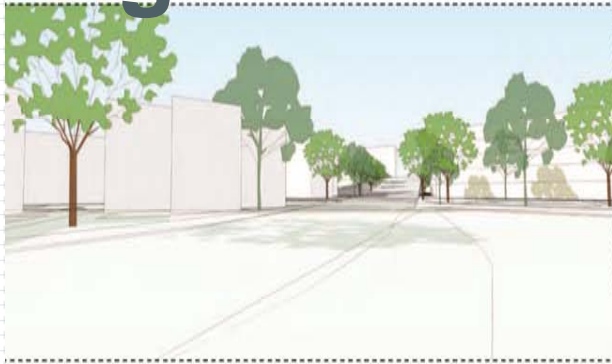
Co-financed by the European Union
Trans-European Transport Network (TEN-T)



Department for
Regional
Development
www.drdrni.gov.uk



Alignment One



let's go together
translink.co.uk



Co-financed by the European Union
Trans-European Transport Network (TEN-T)



Department for
Regional
Development
www.drdo.gov.uk

 **Translink**

Alignment One



let's go together
translink.co.uk



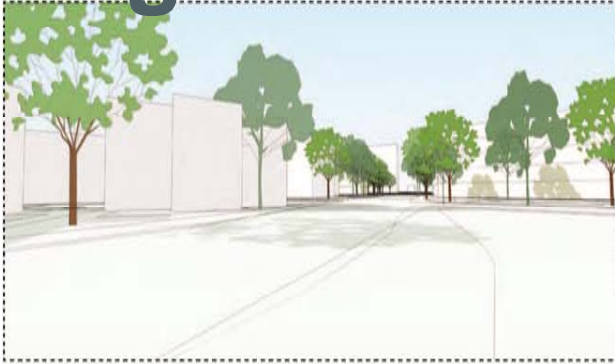
Co-financed by the European Union
Trans-European Transport Network (TEN-T)



Department for
Regional
Development
www.drdrni.gov.uk

 **Translink**

Alignment One



let's go together
translink.co.uk



Co-financed by the European Union
Trans-European Transport Network (TEN-T)



Department for
Regional
Development
www.drdo.gov.uk



Alignment One



Myburgh

let's go together
translink.co.uk



Co-financed by the European Union
Trans-European Transport Network (TEN-T)



Department for
Regional
Development
www.dr.dni.gov.uk

 **Translink**

Alignment One



let's go together
translink.co.uk



Co-financed by the European Union
Trans-European Transport Network (TEN-T)



Department for
Regional
Development
www.drda.gov.uk



Alignment Two



let's go together
translink.co.uk



Co-financed by the European Union
Trans-European Transport Network (TEN-T)



Department for
Regional
Development
www.drdrni.gov.uk



Alignment Two



22

let's go together
translink.co.uk



Co-financed by the European Union
Trans-European Transport Network (TEN-T)



Department for
Regional
Development
www.drdo.gov.uk



Alignment Three



let's go together
translink.co.uk



Co-financed by the European Union
Trans-European Transport Network (TEN-T)



Department for
Regional
Development
www.drdrni.gov.uk



Alignment Three



let's go together
translink.co.uk



Co-financed by the European Union
Trans-European Transport Network (TEN-T)



Department for
Regional
Development
www.drdo.gov.uk



Alignment Three



let's go together
translink.co.uk



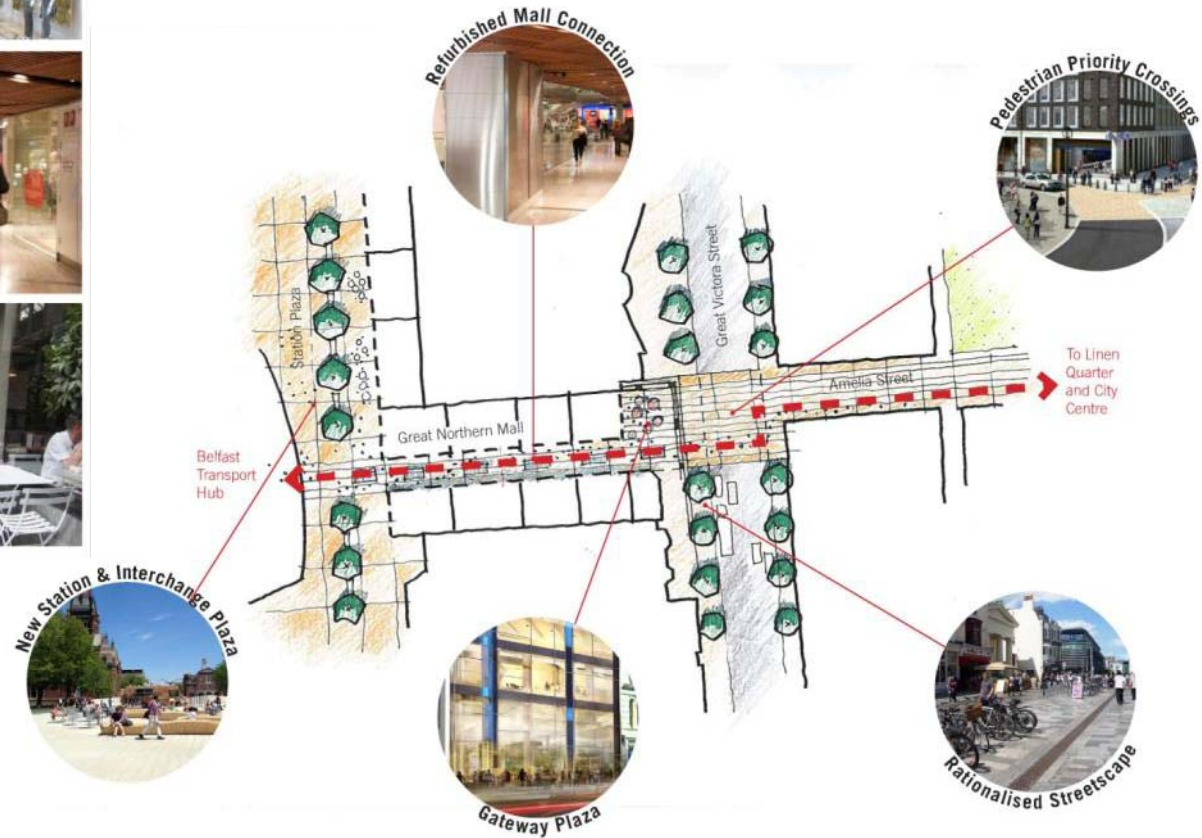
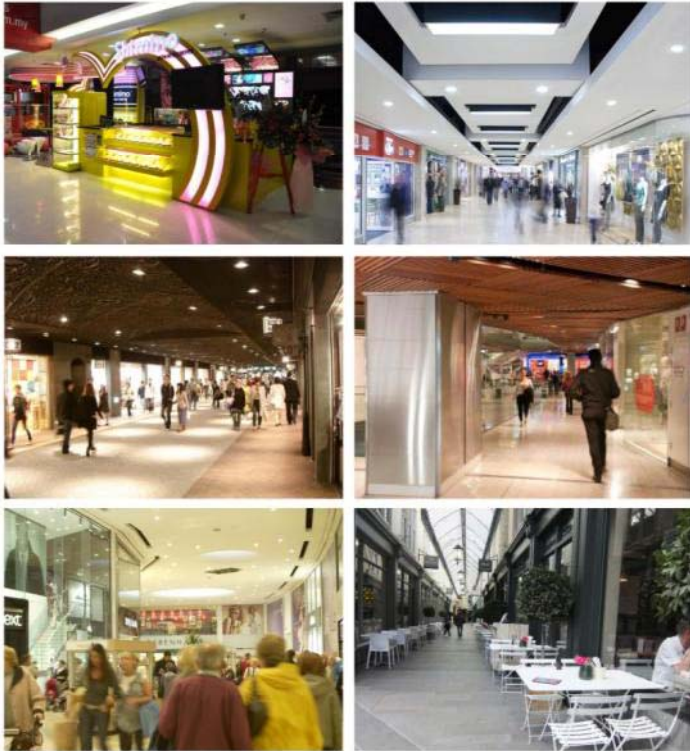
Co-financed by the European Union
Trans-European Transport Network (TEN-T)



Department for
Regional
Development
www.drdo.gov.uk



Interface with adjoining sites - Mall



Urban Realm - Precedents



Transport Interchange



Cycle Hub



Gateway



Urban



Lifestyle

Streetscape Concepts



The existing streetscape and public realm on Great Victoria Street is poor quality and lacks legibility - with clutter obscuring the entrance to the Great Northern Mall and Station...

.....A fully re-considered plaza in concert with streetscape improvements to Victoria Road could provide a transformational new gateway to the Transport hub linking back to the Linen Quarter and the City Centre



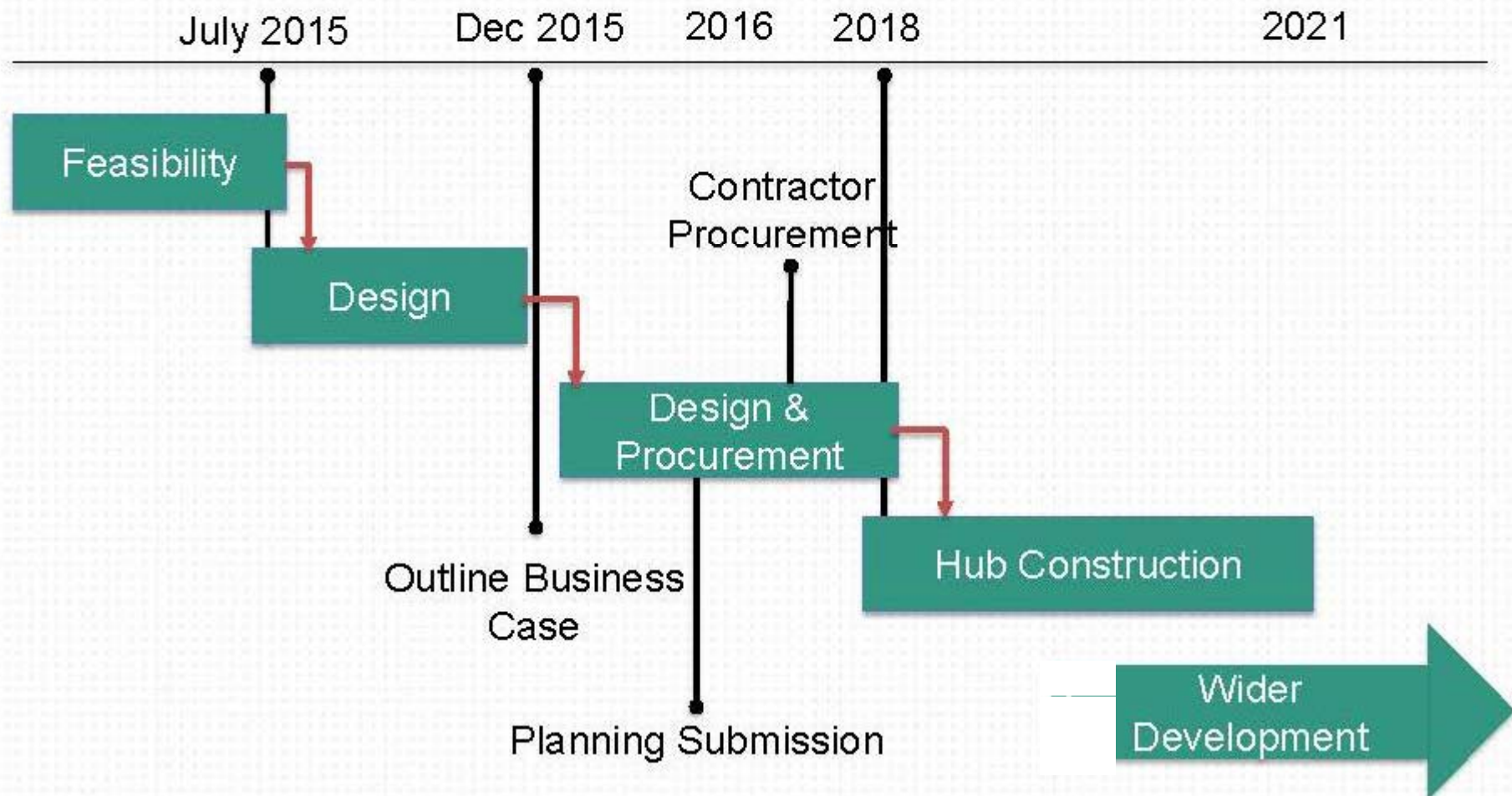
Informing/ Consulting



Neighbourhood Engineering Studio – July 2015

- Public Consultations
- Sandy Row Community Forum (SRCF)
- West Belfast Partnership Board
- Belfast City Mission
- Neighbourhood Building
- Urban Villages
- Local Land and Business Owners
- Network Rail
- CIE (Irish Rail)

Indicative Project Timelines



Thank you

let's go together
translink.co.uk



Co-financed by the European Union
Trans-European Transport Network (TEN-T)



Department for
**Regional
Development**
www.drda.gov.uk

